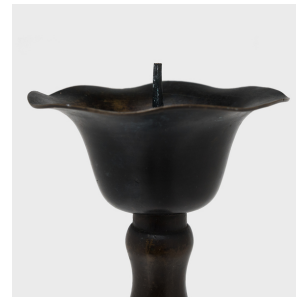
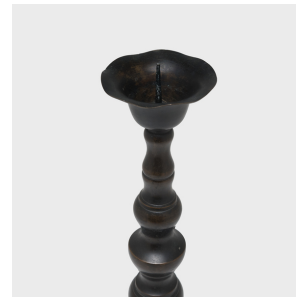
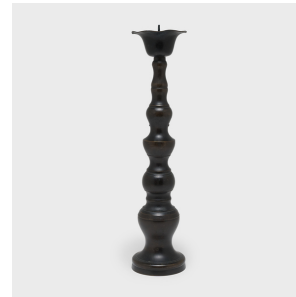


---

# PAGODA RED

---



## PAIR OF JAPANESE BRONZE CANDLE STICKS

**\$1,580**

Taishō period, Japan • Japan • Bronze • Collection #CBRZ001

H: 18.25" Dia: 4.0"

Impeccably cast of bronze alloy, this pair of early 20th century shokudai, or candle stands, is a spectacular example of traditional Japanese metalwork. The elegant shokudai have a classic design often used for Buddhist altar shrines, featuring a sinuous, tapered base and a flared candle dish shaped as a lotus leaf. Visually similar to turned wooden posts, these fine candlesticks are sculpted with fluid lines and repeated curves, darkened by a rich patina that imitates a smooth lacquer finish. The base is etched with Japanese characters that date the pair to the Taisho period (1912-1926).



1740 W. Webster Ave., Chicago, IL 60614 • 773-235-1188 • [info@pagodared.com](mailto:info@pagodared.com)

PAGODARED.COM