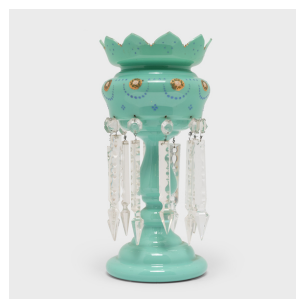

PAGODA RED



PAIR OF BLUE GLASS MANTLE LUSTERS

\$1,880

Late 19th Century • Europe • Pigment, Glass, Crystal • Collection #CFC382

H: 14.5" Dia: 8.0"

Considered the height of luxury in the Victorian era, mantle lusters were used as candle stands and were placed on either end of a fireplace mantel. The term "luster" refers to the crystal or glass prisms that hang from the bowl, designed to reflect light throughout a room.

This fabulous pair of antique mantle lusters is crafted of turquoise-blue opaque glass hand-painted with dotted floral decoration and strung with long crystal prism droppers. Each of the lusters features a bulbous upper bowl raised by a curved pedestal base and topped by a tulip-form flared rim. Continued...



1740 W. Webster Ave., Chicago, IL 60614 • 773-235-1188 • info@pagodared.com

PAGODARED.COM

PAGODA RED

PAIR OF BLUE GLASS MANTLE LUSTERS

Today, mantle lusters such as are highly sought after by collectors and add bright color to modern interiors.

Crystal droppers are likely replacement.

