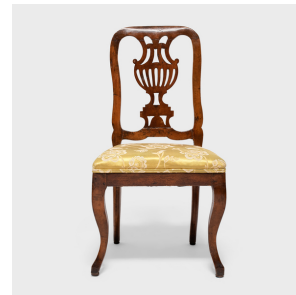

PAGODA RED



PAIR OF CHIPPENDALE STYLE EUROPEAN DINING CHAIRS

\$2,880

c. 1800 • Europe • Walnut • Collection #CFC341

W: 20.0" D: 17.5" H: 39.0"

This pair of antique dining chairs is crafted in the style of Chippendale furniture with fine hardwood frames and upholstered seats. Dated to the early 19th century, the side chairs are minimally decorated to focus the eye on the carved chair backs and accentuate the clean curvature of the cabriole legs. The chair backs are designed with openwork back splats shaped in the form of an ornate urn or vase. The seats are upholstered with a lustrous gold floral fabric. Beautifully aged yet perfectly timeless, this pair looks wonderful gathered around a dining table or placed throughout a sitting room as additional seating. Continued...



1740 W. Webster Ave., Chicago, IL 60614 • 773-235-1188 • info@pagodared.com

PAGODARED.COM

PAGODA RED

PAIR OF CHIPPENDALE STYLE EUROPEAN DINING CHAIRS

From the collection of Frances and Gary Comer.



1740 W. Webster Ave., Chicago, IL 60614 • 773-235-1188 • info@pagodared.com

PAGODARED.COM