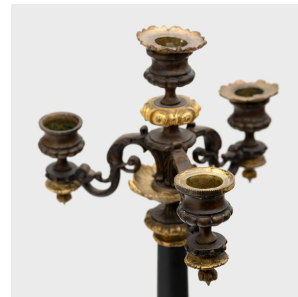
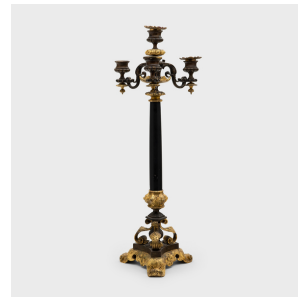


---

# PAGODA RED

---



## PAIR OF FRENCH GILT BRONZE AND SLATE CANDELABRAS

**\$3,680**

c. 1850 • France • Bronze, Acrylic, Slate • Collection #CFC631

W: 6.0" D: 6.0" H: 20.0"

This regal pair of bronze and slate candelabras originated in 19th-century France and are beautifully detailed with molded and gilt embellishments. Crafted in the style of Empire furniture, each candlestick rests on a tiered, triform bronze base of gilt foliate scrollwork surrounding a central baluster post. From each base, a sleek stone stem of polished black slate rises to support the cast bronze top of three curved arms and four candle dishes, embellished with further gilt elements and bobèches, or drip pans. A gorgeous example of French opulence, this pair of gilt candelabras adds impressive refinement to any setting. Continued...



1740 W. Webster Ave., Chicago, IL 60614 • 773-235-1188 • [info@pagodared.com](mailto:info@pagodared.com)

PAGODARED.COM

---

# PAGODA RED

---

## PAIR OF FRENCH GILT BRONZE AND SLATE CANDELABRAS

From the collection of Frances and Gary Comer.

Multiple drip pans have been lost. Large chip to slate post on one candelabra.



1740 W. Webster Ave., Chicago, IL 60614 • 773-235-1188 • [info@pagodared.com](mailto:info@pagodared.com)

PAGODARED.COM