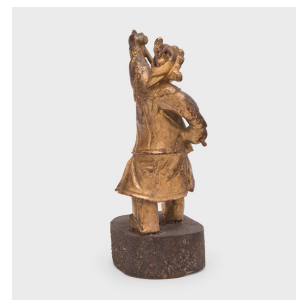
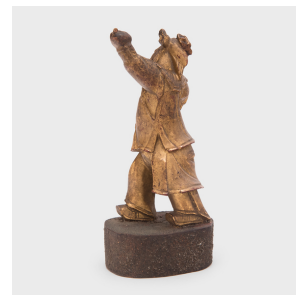

PAGODA RED



MYTHICAL GILT FIGURINE

\$428

c. 1700 • China • Pigment, Wood, Lacquer • Collection #CFC180A

W: 2.25" D: 1.75" H: 4.75"

Lavishly pigmented and carved with intricate detail, this gilt figurine was originally a decorative element from an ornate bed surround. The petite figurine dates to the early 18th century and likely depicts a person from Chinese mythology or a renowned literary classic. Finished with lacquer and gilt pigments, the hand-carved figure is dressed in flowing robes and holds a long-handled weapon or flag high above his head. A wonderful keepsake from a bygone era, we love this figure for its spirited energy, traceable in the tension of his raised arms and the folds of his fabric garments. Continued...



1740 W. Webster Ave., Chicago, IL 60614 • 773-235-1188 • info@pagodared.com

PAGODARED.COM

PAGODA RED

MYTHICAL GILT FIGURINE

Both ends of the weapon in the figure's hands have been lost to time.



1740 W. Webster Ave., Chicago, IL 60614 • 773-235-1188 • info@pagodared.com

PAGODARED.COM