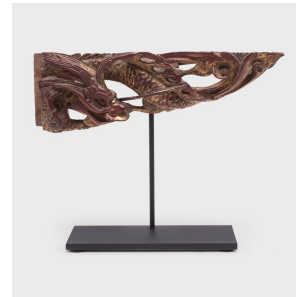

PAGODA RED



PAIR OF GILT DRAGON FRAGMENTS

\$480

c. 1850 • China • Pigment, Northern Elmwood, Lacquer • Collection #CFC109

W: 9.0" D: 2.0" H: 7.0"

These hand-carved wooden fragments originated as decorative elements of ornate Qing-dynasty furniture or architecture. Colored by red lacquer and gilt pigments, each fragment is carved in the form of a sinuous dragon, one of the four divine animals and a symbol of power, rank, and fertility. Elevated by custom steel display mounts, these gilt dragons add bright color and iridescence to a bookcase or table arrangement.



1740 W. Webster Ave., Chicago, IL 60614 • 773-235-1188 • info@pagodared.com

PAGODARED.COM