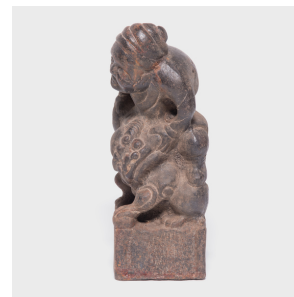

PAGODA RED



PAIR OF MYTHICAL ENTERTAINER CHARMS

\$1,780

c. 1850 • Shanxi, China • Cast Iron • Collection #BJFF178

W: 3.5" D: 3.25" H: 9.25"

This pair of sculptures were originally the finials of architectural posts. They feature a duo of court entertainers riding mythical qilin. Representing prosperity, qilin wore collars of bells around their necks. In this case, the entertainers are using these bells in their own playful duet. These sculptures have gained incredible texture from their centuries of touch as part of a 19th-century northern Chinese home. Today, they stand alone as dynamic and amusing sculptures or as the ultimate bookends.



1740 W. Webster Ave., Chicago, IL 60614 • 773-235-1188 • info@pagodared.com

PAGODARED.COM