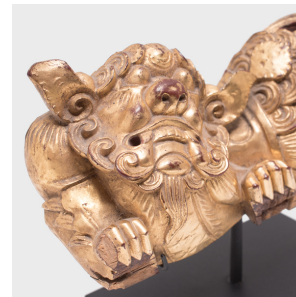
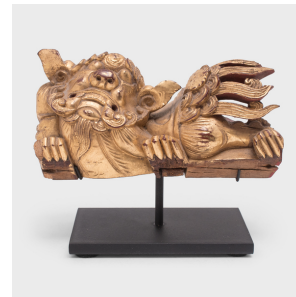

PAGODA RED



PAIR OF GILT FU DOG FRAGMENTS

\$880

1870 • China • Pigment, Wood, Lacquer • Collection #CFC170C

W: 5.5" D: 2.5" H: 5.5"

These hand-carved wooden fragments originated as decorative elements of ornate Qing-dynasty furniture or architecture. Colored by gilt pigments over an underlayer of red lacquer, each fragment is carved in the form of a mythical fu dog with curly manes and flaming tails. Also known as shishi, pairs of fu dog lions are believed to be benevolent guardians, protecting against malevolent spirits and misfortune. Elevated by custom steel display mounts, these gilt lions add bright color and iridescence to a bookcase or table arrangement.



1740 W. Webster Ave., Chicago, IL 60614 • 773-235-1188 • info@pagodared.com

PAGODARED.COM