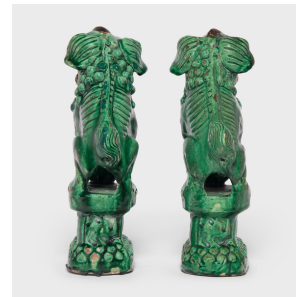
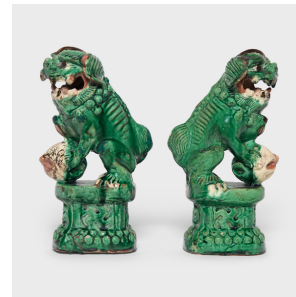
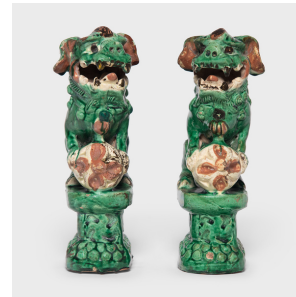

PAGODA RED



PAIR OF SANCAI ALTAR FU DOGS

\$1,880

c. 1900 • China • Ceramic • Collection #CFC027

W: 5.25" D: 3.25" H: 9.5"

Although these fu dogs may look wicked - with their fearsome expressions and piercing gaze - they're actually benevolent guardians of the home. Also known as shishi, pair of fu dog lions are traditionally placed at the thresholds of sacred spaces, such as homes, temples, and tombs. These ceramic fu dogs are dated to the early 20th century and glazed in the style of ancient sancai ware, or three color ware, named for the characteristic green, amber, and creme-colored glazes that flow and mix together across the sculptural forms. Continued...



1740 W. Webster Ave., Chicago, IL 60614 • 773-235-1188 • info@pagodared.com

PAGODARED.COM

PAGODA RED

PAIR OF SANCAI ALTAR FU DOGS

Offering protection from malevolent spirits and misfortune, these charming fu dogs stand guard throughout the home as bookends, garden ornaments, or tabletop sculptures.



1740 W. Webster Ave., Chicago, IL 60614 • 773-235-1188 • info@pagodared.com

PAGODARED.COM