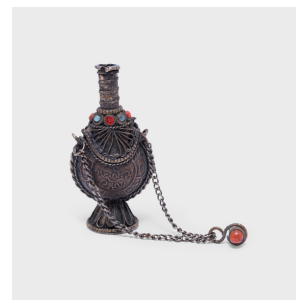
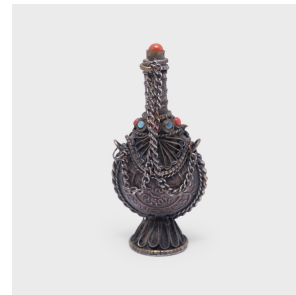
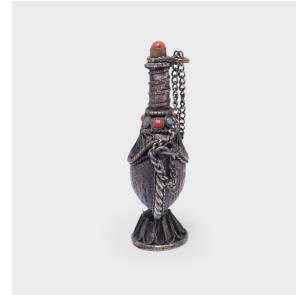


---

# PAGODA RED

---



## TIBETAN SILVER SNUFF BOTTLE

**\$180**

c. 1900 • Tibet • Bead, Silver, Alloy • Collection #CESB048B

W: 1.0" D: 0.75" H: 2.0"

This early 20th century Tibetan snuff bottle is delightfully ornate, crafted with silver metalwork and encrusted with colorful beads. The small bottle has a teardrop shape with a footed base and a long, slender neck. The lid is adorned with a red bead finial and linked to the bottle by a short chain.

Thin strips of braided and looped metal decorate the exterior, now accented by a beautiful patina. Layers of chain-like metalwork drape over the shoulders like necklaces draped over décolletage. Continued...



1740 W. Webster Ave., Chicago, IL 60614 • 773-235-1188 • [info@pagodared.com](mailto:info@pagodared.com)

PAGODARED.COM

---

# PAGODA RED

---

## TIBETAN SILVER SNUFF BOTTLE

Decorating the bottle in repoussé is a mythical beast surrounded by waves and roaring with its tongue hanging out. A true work of art with its sculptural form, this snuff bottle is a fantastic collector's item and unique keepsake of the past.



1740 W. Webster Ave., Chicago, IL 60614 • 773-235-1188 • [info@pagodared.com](mailto:info@pagodared.com)

PAGODARED.COM