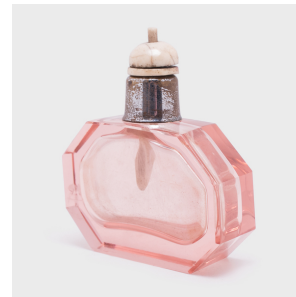

PAGODA RED



PINK DECO PERFUME BOTTLE WITH SNUFF SPOON

\$380

c. 1930 • Europe • Metal, Glass, Bone • Collection #CFC245

W: 3.5" D: 1.25" H: 3.5"

A relic of the Art Deco era, this pink glass perfume bottle has been retrofitted with a small carved bone spoon for use as a stylish snuff bottle. A mixture of finely powdered tobacco, herbs, and spices, snuff provided an opportunity to display one's refined aesthetic through collectible snuff bottles. An unusual 20th-century example, this perfume-turned-snuff bottle brings a playful, modern form to a long-running tradition.

Bottle has a small chip on one side.



1740 W. Webster Ave., Chicago, IL 60614 • 773-235-1188 • info@pagodared.com

PAGODARED.COM