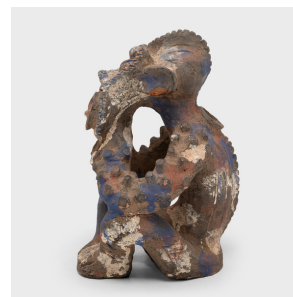


---

# PAGODA RED

---



## MAMBILA POLYCHROME SEATED FIGURE

**\$680**

20th Century • Nigeria • Pigment, Ceramic • Collection #CBH125

W: 7.0" D: 7.0" H: 10.0"

Attributed to an artist of the Mambila people of Nigeria and Cameroon, this earthenware figure depicts a seated man holding a mask to his face. Possibly depicting a clan's ancestor, figures such as this were used in a variety of contexts, such as to elicit wealth, facilitate healing, and guard sacred shrines. Unusual for the medium and seated posture, this figure was likely created as a decorative sculpture in the tradition of Mambila statuary.



1740 W. Webster Ave., Chicago, IL 60614 • 773-235-1188 • [info@pagodared.com](mailto:info@pagodared.com)

PAGODARED.COM