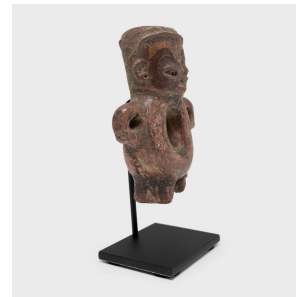
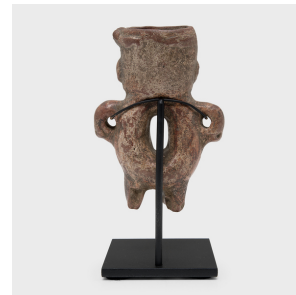
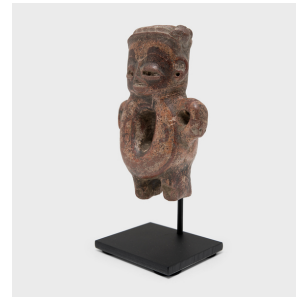


---

# PAGODA RED

---



## CHUPICUARO REDWARE FIGURE

**\$980**

c. 300 BC • Mexico • Ceramic, Slip • Collection #CBH152

W: 3.5" D: 1.75" H: 5.0"

This standing effigy figure was crafted in 300 BC from the ancient Chupicuaro region of Mexico and was likely used as a ritual or burial offering. The ceramic works of the Chupicuaro people are often distinguished by their slanted, coffee-bean shaped eyes and flattened form.

This particular ceramic figure is reminiscent of a young child or baby, depicted with short limbs and small facial features. The figure is hollow with an opening at the top of the head and a hole at the center of the stomach, potentially used as a handle. Continued...



1740 W. Webster Ave., Chicago, IL 60614 • 773-235-1188 • [info@pagodared.com](mailto:info@pagodared.com)

PAGODARED.COM

---

# PAGODA RED

---

## CHUPICUARO REDWARE FIGURE

These elements could identify this figure as an effigy vessel which are believed to be temporary containers for the soul of the deceased. Traces of red pigment indicate that this was once brightly painted with slip.

