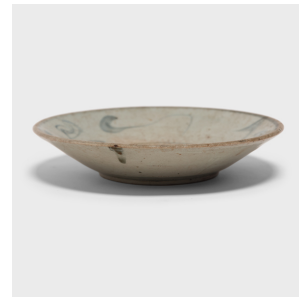

PAGODA RED



PROVINCIAL BLUE AND WHITE PLATE

\$228

c. 1850 • China • Ceramic • Collection #EMC002H

H: 1.75" Dia: 9.5"

Calligraphic sweeps of blue bring this 19th century footed plate to life, brushed atop a blue-grey glaze that cloaks the simple ceramic form. Once used daily for tea, rice, and soup, this expressive example of Chinese blue and white ceramics can today be used as a decorative tabletop centerpiece or serving plate.



1740 W. Webster Ave., Chicago, IL 60614 • 773-235-1188 • info@pagodared.com

PAGODARED.COM