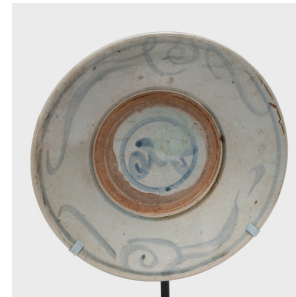

PAGODA RED



PROVINCIAL BLUE AND WHITE PLATE

\$368

c. 1850 • China • Ceramic • Collection #EMC002P

W: 9.5" D: 4.0" H: 14.0"

Calligraphic sweeps of blue bring this 19th-century footed plate to life, brushed atop a blue-grey glaze that cloaks its simple ceramic form. Once used as an everyday serving dish, this rustic plate has been reimagined as a tabletop sculpture, elevated by a custom steel mount.



1740 W. Webster Ave., Chicago, IL 60614 • 773-235-1188 • info@pagodared.com

PAGODARED.COM