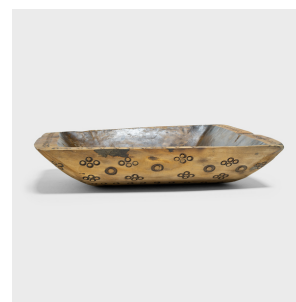

PAGODA RED



BURNT WOOD FARM TRAY

\$680

c. 1900 • Xinjiang, China • Wood • Collection #TLB153I

W: 21.25" D: 14.0" H: 4.0"

This wooden farm tray from northern China charms with its rustic finish and asymmetrical form. Hand-carved from a single block of wood, the large tray is truly one-of-a-kind, shaped to follow the natural contours of the wood. The exterior has been refinished and decorated with a playful, all-over pattern of wood burnt rings, contrasted by the rich patina that darkens the interior basin. Originally used for food prep in a provincial farm or kitchen, the tray brings a touch of organic modern to contemporary interiors as a catch-all or serving platter.



1740 W. Webster Ave., Chicago, IL 60614 • 773-235-1188 • info@pagodared.com

PAGODARED.COM