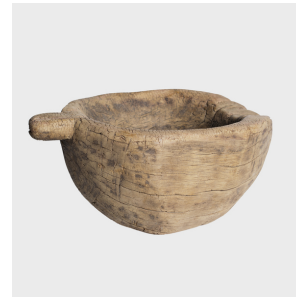

PAGODA RED



PROVINCIAL RICE FLOUR MORTAR

\$1,280

c. 1850 • Northern China, China • Wood • Collection #BJD027

H: 8.5" Dia: 17.25"

Used to grind the outer husks off rice grains, this humble 19th-century mortar hales from northern China, where it had been a kitchen staple in a provincial home. Carved from elmwood, the mortar's simple, gourd-like shape transcends pure function to showcase the wood's beautiful grain patterns. Cracked and weathered, its earnest appeal has only increased over the years.



1740 W. Webster Ave., Chicago, IL 60614 • 773-235-1188 • info@pagodared.com

PAGODARED.COM