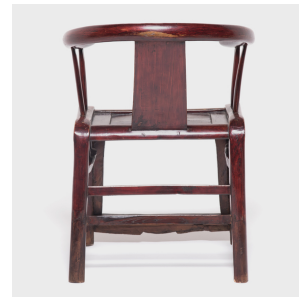
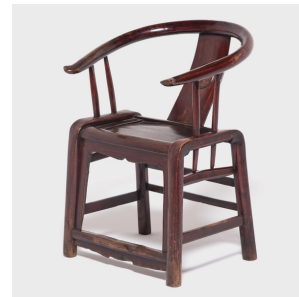
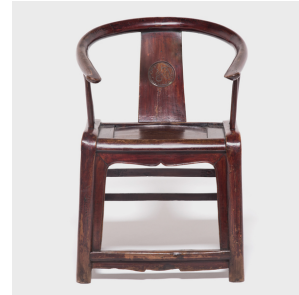


---

# PAGODA RED

---



## PROVINCIAL ROUND BACK CHAIR

**\$980**

c. 1850 • Shanxi, China • Northern Elmwood • Collection #N0451

W: 26.5" D: 25.0" H: 35.0"

Prior to the 10th century, Chinese society eschewed raised seats in favor of mats. The rising popularity of chairs and other forms of elevated seating led craftsmen to adapt traditional cabinetry and architecture techniques to the human body. In the case of this Yuanyi, or round chair, the flowing crestrail is a direct descendant of the simple armrests that had traditionally supported individuals on mats in their homes. Continued...



1740 W. Webster Ave., Chicago, IL 60614 • 773-235-1188 • [info@pagodared.com](mailto:info@pagodared.com)

PAGODARED.COM

---

# PAGODA RED

---

## PROVINCIAL ROUND BACK CHAIR

This homage to an ancestral form, combined with traditional mortise-and-tenon joinery techniques, created an elegant, functional chair that has endured for centuries and inspired many contemporary furniture designers in the West and the East.



1740 W. Webster Ave., Chicago, IL 60614 • 773-235-1188 • [info@pagodared.com](mailto:info@pagodared.com)

PAGODARED.COM