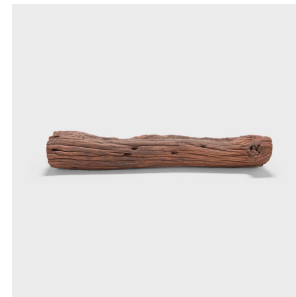
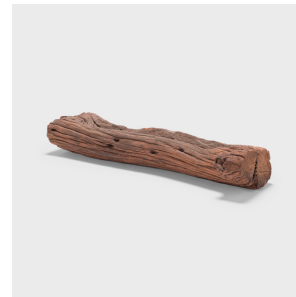
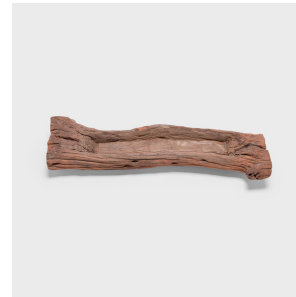

PAGODA RED



PROVINCIAL TROUGH

\$488

c. 1900 • Shanxi, China • Northern Elmwood • Collection #BJGG028D

W: 40.0" D: 10.0" H: 6.5"

This elmwood farm trough from China's Shanxi province charms with its asymmetrical form. A common sight throughout rural Qing-dynasty China, a provincial trough such as this would have held grain for livestock and barnyard fowl. The rustic trough showcases the expressive grain and raw texture of Chinese elmwood, deeply weathered by a century of use. With its shallow basin, the trough makes a wonderful planter, perfect for hens-and-chicks and other lush succulents.



1740 W. Webster Ave., Chicago, IL 60614 • 773-235-1188 • info@pagodared.com

PAGODARED.COM