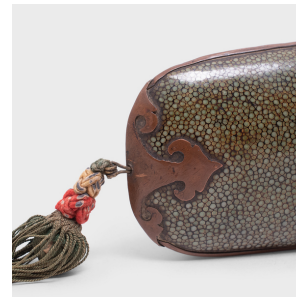

PAGODA RED



SHAGREEN GLASSES CASE WITH TASSEL

\$980

c. 1900 • China • Collection #CFC219

W: 3.0" D: 1.5" H: 15.5"

This Chinese spectacle case is carved from wood with a striking shagreen covering. The case dates from the Qing Dynasty (1644-1911), still in wonderful condition with a rich deep color and patina. It is decorated with a silk hand-knotted tassel and lingzhi mushroom brass corner protectors, symbols of longevity and good fortune. Slender and petite in size, this antique case can be used for small eyeglasses or for stowing small items like jewelry, pens or trinkets.

From the collection of Frances and Gary Comer.



1740 W. Webster Ave., Chicago, IL 60614 • 773-235-1188 • info@pagodared.com

PAGODARED.COM