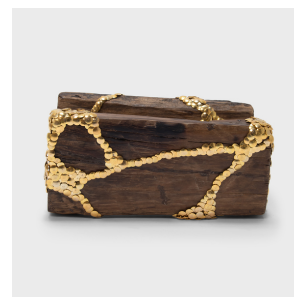


---

# PAGODA RED

---



## KINTSUGI REST

**\$688**

c. 1900 • Shanxi, China • Cypress, Metal • Collection #BJGG063F

W: 10.75" D: 6.0" H: 5.25"

In an exclusive collaboration with PAGODA RED, each hand-studded piece by artist the bms. was transformed from a provincial 19th-century artifact into a one-of-a-kind work of art. Embellishing with silver and gold tacks, the bms. adds a contemporary twist to our storied objects, animating each surface with bold and provocative designs.

This kintsugi rest was originally a Qing-dynasty low stool, used by a shoemaker while he assembled pairs of shoes.  
Continued...



1740 W. Webster Ave., Chicago, IL 60614 • 773-235-1188 • [info@pagodared.com](mailto:info@pagodared.com)

**PAGODARED.COM**

---

# PAGODA RED

---

## KINTSUGI REST

Marked by the artist's golden touch, the simple stool has been gilded with a pattern inspired by the Japanese art of kintsugi, wherein damaged ceramics are repaired with precious metals. In the spirit of kintsugi, this stool has been given new life as a decorative sculpture or an unexpected way to hold mail, napkins, or other ephemera.



1740 W. Webster Ave., Chicago, IL 60614 • 773-235-1188 • [info@pagodared.com](mailto:info@pagodared.com)

PAGODARED.COM