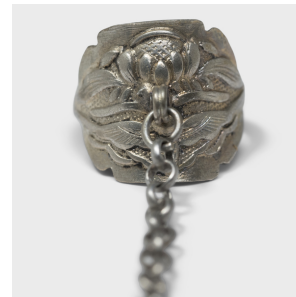

PAGODA RED



LOTUS CHARM RING

\$88

c. 1900 • China • Silver • Collection #LUBRING_HH

W: 0.75" D: 0.75" H: 2.5"

Dated to the late 19th century, this silver charm ring was believed to protect the wearer from bad luck and malevolent spirits. The ring is decorated with a repoussé design of a cicada and a lotus blossom. An emblem of summer, the lotus flower symbolizes purity, perfection and beauty. The front of the ring is strung with a thin chain ending with a small bell decorated with a floral design.

Ring band is adjustable. All jewelry sales are final. No refunds or exchanges.



1740 W. Webster Ave., Chicago, IL 60614 • 773-235-1188 • info@pagodared.com

PAGODARED.COM