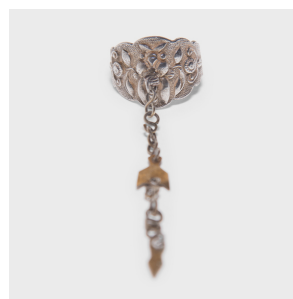
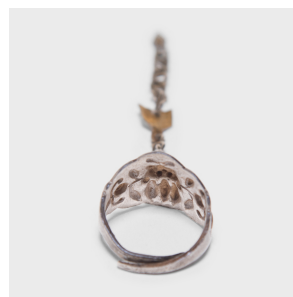
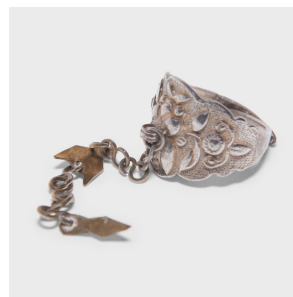

PAGODA RED



HONEYBEE CHARM RING

\$88

c. 1900 • China • Silver • Collection #LUBRING_N

H: 0.5" Dia: 0.75"

Dated to the late 19th century, this silver charm ring was believed to protect the wearer from bad luck and malevolent spirits. The ring is cast in low relief with floral patterns and a central honeybee design. From the ring hangs a thin chain bearing petite charms.

Ring size is adjustable. All jewelry sales are final. No refunds or exchanges.



1740 W. Webster Ave., Chicago, IL 60614 • 773-235-1188 • info@pagodared.com

PAGODARED.COM

**PAGODA
RED**

HONEYBEE CHARM RING

Additional Dimensions:

Chain Length: 2"



1740 W. Webster Ave., Chicago, IL 60614 • 773-235-1188 • info@pagodared.com

PAGODARED.COM