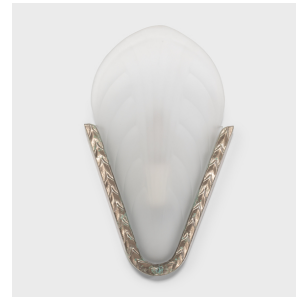

PAGODA RED



PAIR OF FRENCH DECO SHELL-FORM WALL SCONCES

\$2,880

c. 1930 • France • Bronze, Frosted Glass • Collection #CFC572A

W: 7.0" D: 3.0" H: 11.5"

This charming pair of early 20th century wall sconces exemplifies French Art Deco lighting with sculptural form and a soft, delicate appearance. The lights have frosted molded-glass shades resembling sea shells or flower petals, patterned with a fluted texture that enhances the flared shape. The frosted glass shades are set into V-shaped brackets of nickel-plated bronze with a simple braided texture.

From the collection of Frances and Gary Comer.

The sconces are each wired with one socket and are in working condition.



Minor verdigris oxidation to metal frame.
1740 Webster Ave., Chicago, IL 60614 • 773-235-1188 • info@pagodared.com

PAGODARED.COM