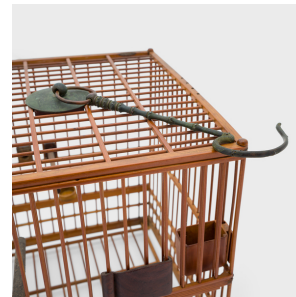
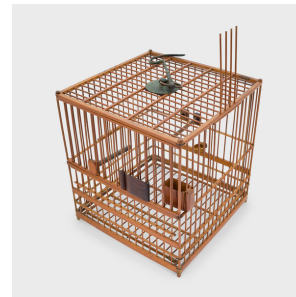
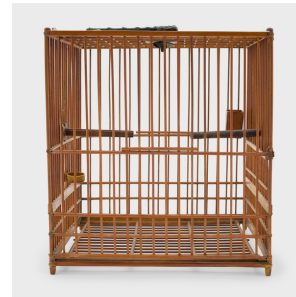

PAGODA RED



SQUARE BAMBOO BIRDCAGE WITH SCROLL CHARM

\$680

c. 1900 • China • Bamboo, Metal, Hardwood • Collection #CFC451

W: 8.75" D: 8.75" H: 17.5"

This well-proportioned birdcage was once home to the pet of a Qing-dynasty aristocrat. Dated to the early 20th century, the square cage is carefully assembled of thin rods of bamboo with a sliding side door and a metal hook on the top. Several accessories are affixed to the sides of the cage, including two short perches, two wooden cups for water and birdseed, and a small charm carved from hardwood in the shape of an unfurled scroll. The metalwork of the hook mimics the form of bamboo stalks and has weathered with time, developing a verdigris patina. Continued...



1740 W. Webster Ave., Chicago, IL 60614 • 773-235-1188 • info@pagodared.com

PAGODARED.COM

PAGODA RED

SQUARE BAMBOO BIRDCAGE WITH SCROLL CHARM

A work of exquisite craftsmanship, this fine birdcage is a wonderful collector's item and a storied sculptural object.

From the collection of Frances and Gary Comer.

Additional accessories will be packaged separately during shipping.

Due to its fragility, this item is only available via white glove delivery or local pickup.

