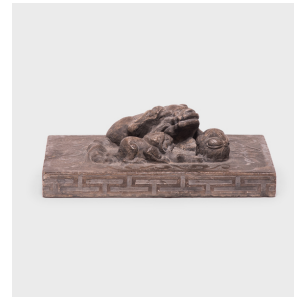


---

# PAGODA RED

---



## STONE SHOEMAKER'S WEIGHT WITH MOTHER, CUB, AND EMBROIDERED BALL

**\$1,880**

c. 1900 • Shanxi, China • Materials, Stone • Collection #BJA005

W: 11.0" D: 7.75" H: 3.25"

Carved from a solid piece of stone, this weight was originally used by a shoemaker to press down large pieces of leather. Surrounded by intricate scrollwork and peony blossoms, a guardian fu dog lies beside her cub, each biting the thread of an embroidered ball, a symbol of love and loyalty. This shoemaker's weight was hand carved by an artisan from China's Shanxi province and lives on as a fascinating tabletop sculpture.



1740 W. Webster Ave., Chicago, IL 60614 • 773-235-1188 • [info@pagodared.com](mailto:info@pagodared.com)

PAGODARED.COM