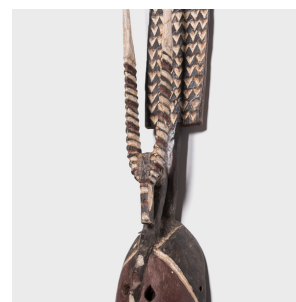
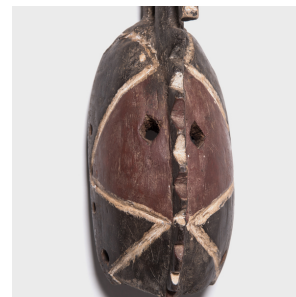
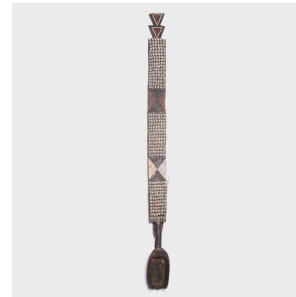

PAGODA RED



MOSSI KARANGA ANTELOPE MASK

\$1,880

c. 1950 • West Africa • Paint, Wood • Collection #CAA1245

W: 5.5" D: 6.0" H: 70.5"

Unlike many African masks worn only by certain castes or secret societies, the karanga mask of the Mossi people of Burkina Faso is held within a patrilineal family line. Crafted in the northern Yatenga region, such masks provide a direct spiritual link between the wearer and their ancestors. The simple oval face mask is topped by an immense totem-like structure decorated with geometric patterns and twisting antelope horns. The antelope is considered a totemic animal inexplicably linked to the clan through a shared life source. Continued...



1740 W Webster Ave, Chicago, IL 60614 • 773.235.1188 • info@pagodared.com

PAGODARED.COM

PAGODA RED

MOSSI KARANGA ANTELOPE MASK

Embodying the antelope's spirit through the mask, the wearer reminds his community of their shared origins and connection to the natural world.

