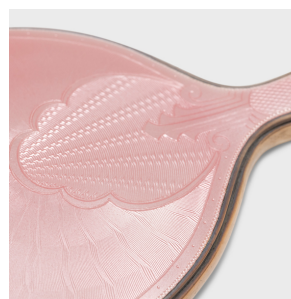

PAGODA RED



PINK GUILLOCHÉ VANITY SET

\$780

1936 • United Kingdom • Silver, Enamel • Collection #CFC632

W: 11.5" D: 4.0" H: 1.5"

With intricate guilloché etching enveloped in an enchanting translucent pink enamel, this pink guilloché vanity set is attributed to A.E. Poston & Co of Birmingham, England, manufactured in 1936. Also known as a toilet service or grooming set, vanity sets were a popular wedding gift and were kept on the woman's bedroom dressing table.

This vanity set is finely crafted of sterling silver and guilloché enamel, a decorative technique that combines mechanical engraving and colorful enamels to create mesmerizing, translucent finishes that catch the light beautifully. This three-piece set includes a handheld mirror, a hair brush, and a garment brush, each backed with pale pink enamel etched with striped banding, waves, and geometric flourishes in the style of Art Deco. Continued...



1740 W. Webster Ave., Chicago, IL 60614 • 773-235-1188 • info@pagodared.com

PAGODARED.COM

PAGODA RED

PINK GUILLOCHÉ VANITY SET

Sterling silver frames encase the enameled backs, hallmarked with the lion passant and individual maker's mark.

From the collection of Frances and Gary Comer.

Minor chip to enamel of garment brush. Minor imperfections to silver frames.

Additional Dimensions:

Mirror: 11.5"W x 4"D x 0.5"H

Hair Brush: 10"W x 3.5"D x 1.5"H

Garment Brush: 6.25"W x 1.5"D x 1.

