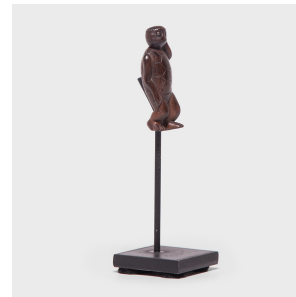
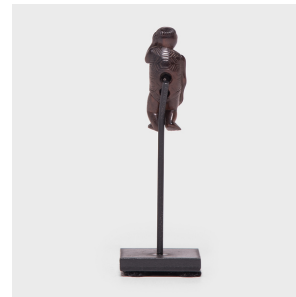
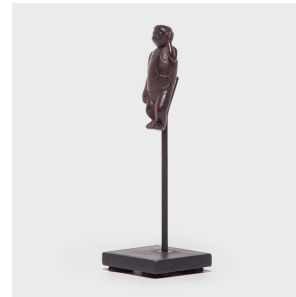

PAGODA RED



ETERNAL TURTLE NETSUKE

\$980

c. 1900 • Japan • Boxwood • Collection #CLP008

W: 1.5" D: 1.5" H: 4.75"

This miniature hand-carved masterpiece is a Japanese netsuke, used as a button-like toggle used to secure cords to traditional Japanese garments. The most highly prized designs were carved with elaborately detailed patterns or evocative imagery, like this stunning treasure made over a century ago during Japan's Edo period (1615-1912). This beautifully crafted netsuke depicts an anthropomorphic turtle, a favored motif of netsuke-carvers as the tortoise is a symbol of longevity, good luck, and support.



1740 W. Webster Ave., Chicago, IL 60614 • 773-235-1188 • info@pagodared.com

PAGODARED.COM