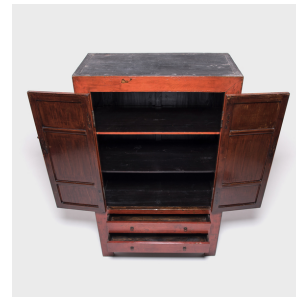

PAGODA RED



TWO DOOR TWO DRAWER RED LACQUER DOWRY CABINET

\$6,880

c. 1850 • Northern China, China • Northern Elmwood • Collection #CAH007

W: 45.0" D: 21.25" H: 73.5"

Made in northern China during the mid-19th century, this tall cabinet was likely part of wedding dowry, bestowed upon a groom filled with silks and gifts. Constructed with mortise and tenon joinery, the elmwood square-corner cabinet embodies the clean lines and refined form of traditional Ming dynasty carpentry. The cabinet's rich red and black lacquered finish captures the light beautifully, gently contrasted by softly burnished brass hardware.



1740 W. Webster Ave., Chicago, IL 60614 • 773-235-1188 • info@pagodared.com

PAGODARED.COM

PAGODA RED

TWO DOOR TWO DRAWER RED LACQUER DOWRY CABINET

Additional Dimensions:

Top Shelf: 42.25"W x 17.5"D x 17"H

Middle Shelf: 42.25"W x 17.5"D x 13.75"H

Bottom Shelf: 42.25"W x 17.5"D x 14.75"H

Drawers: 34.5"W x 16.75"D x 4.5"H



1740 W. Webster Ave., Chicago, IL 60614 • 773-235-1188 • info@pagodared.com

PAGODARED.COM