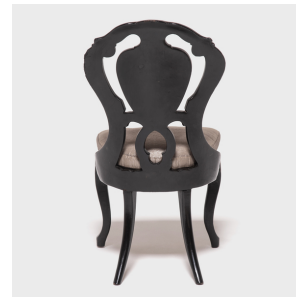
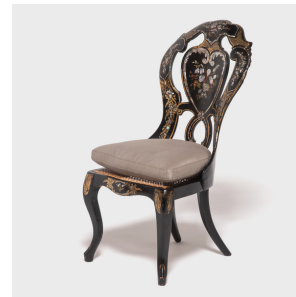
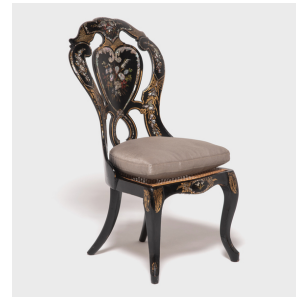

PAGODA RED



VICTORIAN PAPIER-MACHE CHAIR WITH MOTHER OF PEARL INLAY

\$3,980

1880 • Unknown • Paper, Fabric, Mother of Pearl • Collection #BN112

W: 17.5" D: 21.0" H: 34.25"

Since the mid-18th century, Europeans used papier-mâché as an alternative to carved wood. When traditional Chinese lacquer furniture entered the European marketplace in the 19th century, it was discovered that the lacquer, made of tree resin, didn't fare well in the English climate. So industrious Victorians relied on paper-mâché to recreate the luster and sheen of natural lacquer. This durable and versatile material was fashioned into convincing replicas such as this chair, distinguished by its elegant curves and intricate inlaid mother of pearl design. Continued...



1740 W. Webster Ave., Chicago, IL 60614 • 773-235-1188 • info@pagodared.com

PAGODARED.COM

**PAGODA
RED**

VICTORIAN PAPIER-MACHE CHAIR WITH MOTHER OF PEARL INLAY

The chair's classic design and intriguing history make a notable sculptural statement.



1740 W. Webster Ave., Chicago, IL 60614 • 773-235-1188 • info@pagodared.com

PAGODARED.COM