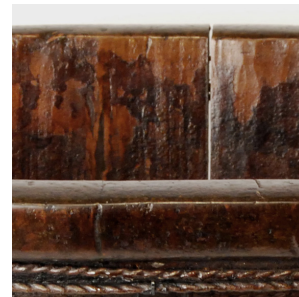

PAGODA RED



WASHING BASIN

\$228

c. 1700 • Jiangsu, China • Northern Elmwood • Collection #ACB033

W: 20.0" D: 12.0" H: 11.0"

The ancient Chinese compared the human body to a tree with the feet like roots. Daily washing of feet was a ritual for many, prescribed by traditional Chinese medicine to promote blood circulation and dispersal of negative energy. Oval-shaped to accommodate a pair of feet, the basin is made of planks of elmwood carefully fitted together and bound with a braided cord. Beautifully burnished from time and use, this washing basin is a wonderful home accent, the perfect place to stow towels or bath accessories.



1740 W. Webster Ave., Chicago, IL 60614 • 773-235-1188 • info@pagodared.com

PAGODARED.COM