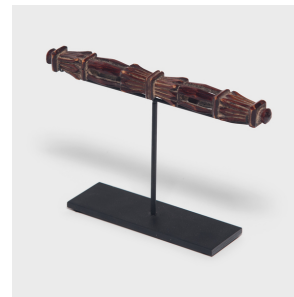

PAGODA RED



WEAVING SHUTTLE

\$328

c. 1850 • Northern China, China • Wood, Steel • Collection #P075G

W: 9.0" D: 2.0" H: 5.5"

For thousands of years, professional weavers in China operated complex looms to weave the luxurious silks, damasks, and gauze favored by the Chinese court and fashionable elite. A relic from a time-honored trade, this weaving shuttle was cleverly hand-carved to contain two small wooden beads within its ornate finishes. The shuttle's exquisite design surpasses its functional origins, today elevated as a sculptural object on a custom steel stand.



1740 W. Webster Ave., Chicago, IL 60614 • 773-235-1188 • info@pagodared.com

PAGODARED.COM